



When Style and Quality Matters

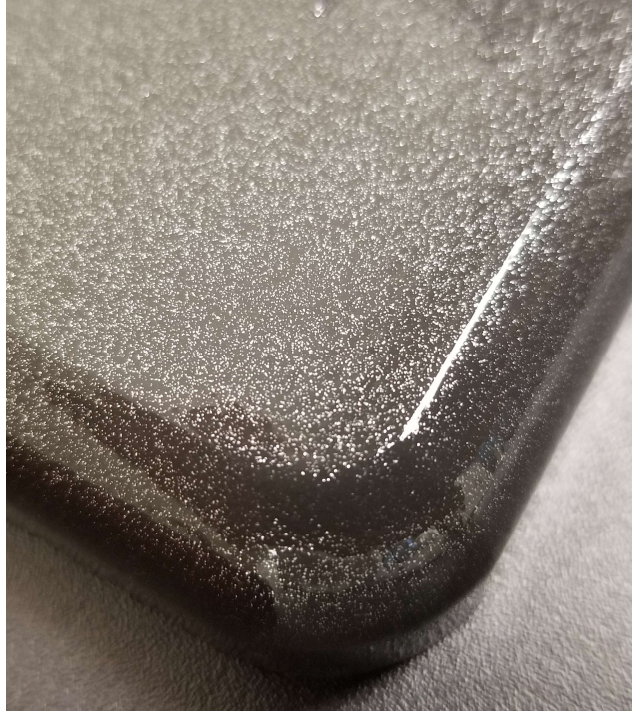
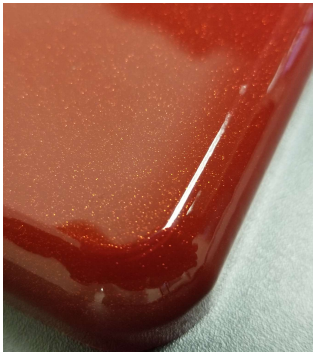
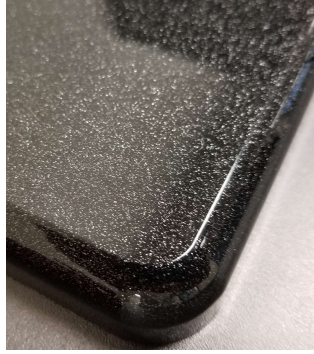
Next Generation. Next Level.



Consumers Digest
2x Awarded
“Best Buy”

Next Generation. Next Level.

White | Silver | Red | Gray | Black



Industry Unique Five (5) Car Color Options

Next Generation. Next Level.



Product Features

- Five (5) Unique Car Metallic Color Options
- Strong ¾-inch Cabinet Construction
- Custom Shop Full Radius Profile
- Industrial Strength 1-Inch Thick Shelves
- Full Extension Ball Bearing Drawer Glides
- Soft-Close Fully Adjustable European Hinges
- Jumbo 0.75-Inch Brushed Chrome Pulls
- Infinite Single or Multi-Wall Design Options
- Three (3) Mounting Options*
- Lock Secures Items
- Wire Management Provides Easy Access to Outlets
- 2x Consumers Digest Awarded “Best Buy”
- Leading Brand Since 2005

Core of Design

2-DOOR JUMBO BASE CABINET
(AVAILABLE IN 3-COLORS)



2-Door Jumbo Base Cabinet UG21001G



FEATURES:

- Strong 3/4" MDF Facing in Graphite Grey Metallic
 - Strong 3/4" MDF & PB Cabinet w/Peppercorn Grey Textured PVC Laminate
 - Custom Shop Full Radius Profile
 - Industrial Strength 1" Thick Wrapped Adjustable Shelf (1) with 200lb Load Rating
 - Industry Unique Integrated 1" Thick MDF Recessed Worktop
 - Jumbo 3/4" Thick Brushed Chrome Pulls
 - Designer 6" Adjustable Feet Keep Cabinets From Ground Moisture and Level
 - Wall Mounting Cleat Included*
 - Lock Keeps Items Secure
 - Soft Close Hinges for Quiet and Smooth Operation
 - Wire Management System for Easy Cord Access to Outlets
 - Infinite Design and Expandable Options through Modular Design
 - CARB (California Air Resources Board) Approved to Help Environment
 - Color: Graphite Grey Metallic and Peppercorn Grey
 - 10-Year Limited Manufacturer Parts Warranty
 - Maximum Dimensions: 35.5" W x 21" D x 37" H
 - Minimum Dimensions: 35.5" W x 21" D x 35" H
- * Consult local cabinet professional on wall mounting & reduce weight for added safety.



2-Door Jumbo Base Cabinet UG21001S



FEATURES:

- Strong 3/4" MDF Facing in Stardust Silver Metallic
 - Strong 3/4" MDF & PB Cabinet w/Peppercorn Grey Textured PVC Laminate
 - Custom Shop Full Radius Profile
 - Industrial Strength 1" Thick Wrapped Adjustable Shelf (1) with 200lb Load Rating
 - Industry Unique Integrated 1" Thick MDF Recessed Worktop
 - Jumbo 3/4" Thick Brushed Chrome Pulls
 - Designer 6" Adjustable Feet Keep Cabinets From Ground Moisture and Level
 - Wall Mounting Cleat Included*
 - Lock Keeps Items Secure
 - Soft Close Hinges for Quiet and Smooth Operation
 - Wire Management System for Easy Cord Access to Outlets
 - Infinite Design and Expandable Options through Modular Design
 - CARB (California Air Resources Board) Approved to Help Environment
 - Color: Stardust Silver Metallic and Peppercorn Grey
 - 10-Year Limited Manufacturer Parts Warranty
 - Maximum Dimensions: 35.5" W x 21" D x 37" H
 - Minimum Dimensions: 35.5" W x 21" D x 35" H
- * Consult local cabinet professional on wall mounting & reduce weight for added safety.



2-Door Jumbo Base Cabinet UG21001W



FEATURES:

- Strong 3/4" MDF Facing in Starfire White Metallic
 - Strong 3/4" MDF & PB Cabinet w/Peppercorn Grey Textured PVC Laminate
 - Custom Shop Full Radius Profile
 - Industrial Strength 1" Thick Wrapped Adjustable Shelf (1) with 200lb Load Rating
 - Industry Unique Integrated 1" Thick MDF Recessed Worktop
 - Jumbo 3/4" Thick Brushed Chrome Pulls
 - Designer 6" Adjustable Feet Keep Cabinets From Ground Moisture and Level
 - Wall Mounting Cleat Included*
 - Lock Keeps Items Secure
 - Soft Close Hinges for Quiet and Smooth Operation
 - Wire Management System for Easy Cord Access to Outlets
 - Infinite Design and Expandable Options through Modular Design
 - CARB (California Air Resources Board) Approved to Help Environment
 - Color: Starfire White Metallic and Peppercorn Grey
 - 10-Year Limited Manufacturer Parts Warranty
 - Maximum Dimensions: 35.5" W x 21" D x 37" H
 - Minimum Dimensions: 35.5" W x 21" D x 35" H
- * Consult local cabinet professional on wall mounting & reduce weight for added safety.

Core of Design

2-DOOR MEDIUM BASE CABINET

2-Door Base Cabinet UG21002B



FEATURES:

- Strong 3/4" MDF Facing in Midnight Black Metallic
 - Strong 3/4" MDF & PB Cabinet w/Peppercorn Grey Textured PVC Laminate
 - Custom Shop Full Radius Profile
 - Industrial Strength 1" Thick Wrapped Adjustable Shelf (1) with 200lb Load Rating
 - Industry Unique Integrated 1" Thick MDF Recessed Worktop
 - Jumbo 3/4" Thick Brushed Chrome Pulls
 - Designer 6" Adjustable Feet Keep Cabinets From Ground Moisture and Level
 - Wall Mounting Cleat Included*
 - Lock Keeps Items Secure
 - Soft Close Hinges for Quiet and Smooth Operation
 - Wire Management System for Easy Cord Access to Outlets
 - Infinite Design and Expandable Options through Modular Design
 - CARB (California Air Resources Board) Approved to Help Environment
 - Color: Midnight Black Metallic and Peppercorn Grey
 - 10-Year Limited Manufacturer Parts Warranty
 - Maximum Dimensions: 23.6" W x 21" D x 37" H
 - Minimum Dimensions: 23.6" W x 21" D x 35" H
- * Consult local cabinet professional on wall mounting & reduce weight for added safety.



2-Door Base Cabinet UG21002G



FEATURES:

- Strong 3/4" MDF Facing in Graphite Grey Metallic
 - Strong 3/4" MDF & PB Cabinet w/Peppercorn Grey Textured PVC Laminate
 - Custom Shop Full Radius Profile
 - Industrial Strength 1" Thick Wrapped Adjustable Shelf (1) with 200lb Load Rating
 - Industry Unique Integrated 1" Thick MDF Recessed Worktop
 - Jumbo 3/4" Thick Brushed Chrome Pulls
 - Designer 6" Adjustable Feet Keep Cabinets From Ground Moisture and Level
 - Wall Mounting Cleat Included*
 - Lock Keeps Items Secure
 - Soft Close Hinges for Quiet and Smooth Operation
 - Wire Management System for Easy Cord Access to Outlets
 - Infinite Design and Expandable Options through Modular Design
 - CARB (California Air Resources Board) Approved to Help Environment
 - Color: Graphite Grey Metallic and Peppercorn Grey
 - 10-Year Limited Manufacturer Parts Warranty
 - Maximum Dimensions: 23.6" W x 21" D x 37" H
 - Minimum Dimensions: 23.6" W x 21" D x 35" H
- * Consult local cabinet professional on wall mounting & reduce weight for added safety.



2-Door Base Cabinet UG21002R



FEATURES:

- Strong 3/4" MDF Facing in Ruby Red Metallic
 - Strong 3/4" MDF & PB Cabinet w/Peppercorn Grey Textured PVC Laminate
 - Custom Shop Full Radius Profile
 - Industrial Strength 1" Thick Wrapped Adjustable Shelf (1) with 200lb Load Rating
 - Industry Unique Integrated 1" Thick MDF Recessed Worktop
 - Jumbo 3/4" Thick Brushed Chrome Pulls
 - Designer 6" Adjustable Feet Keep Cabinets From Ground Moisture and Level
 - Wall Mounting Cleat Included*
 - Lock Keeps Items Secure
 - Soft Close Hinges for Quiet and Smooth Operation
 - Wire Management System for Easy Cord Access to Outlets
 - Infinite Design and Expandable Options through Modular Design
 - CARB (California Air Resources Board) Approved to Help Environment
 - Color: Ruby Red Metallic and Peppercorn Grey
 - 10-Year Limited Manufacturer Parts Warranty
 - Maximum Dimensions: 23.6" W x 21" D x 37" H
 - Minimum Dimensions: 23.6" W x 21" D x 35" H
- * Consult local cabinet professional on wall mounting & reduce weight for added safety.



2-Door Base Cabinet UG21002S



FEATURES:

- Strong 3/4" MDF Facing in Stardust Silver Metallic
 - Strong 3/4" MDF & PB Cabinet w/Peppercorn Grey Textured PVC Laminate
 - Custom Shop Full Radius Profile
 - Industrial Strength 1" Thick Wrapped Adjustable Shelf (1) with 200lb Load Rating
 - Industry Unique Integrated 1" Thick MDF Recessed Worktop
 - Jumbo 3/4" Thick Brushed Chrome Pulls
 - Designer 6" Adjustable Feet Keep Cabinets From Ground Moisture and Level
 - Wall Mounting Cleat Included*
 - Lock Keeps Items Secure
 - Soft Close Hinges for Quiet and Smooth Operation
 - Wire Management System for Easy Cord Access to Outlets
 - Infinite Design and Expandable Options through Modular Design
 - CARB (California Air Resources Board) Approved to Help Environment
 - Color: Stardust Silver Metallic and Peppercorn Grey
 - 10-Year Limited Manufacturer Parts Warranty
 - Maximum Dimensions: 23.6" W x 21" D x 37" H
 - Minimum Dimensions: 23.6" W x 21" D x 35" H
- * Consult local cabinet professional on wall mounting & reduce weight for added safety.



2-Door Base Cabinet UG21002W



FEATURES:

- Strong 3/4" MDF Facing in Starfire White Metallic
 - Strong 3/4" MDF & PB Cabinet w/Peppercorn Grey Textured PVC Laminate
 - Custom Shop Full Radius Profile
 - Industrial Strength 1" Thick Wrapped Adjustable Shelf (1) with 200lb Load Rating
 - Industry Unique Integrated 1" Thick MDF Recessed Worktop
 - Jumbo 3/4" Thick Brushed Chrome Pulls
 - Designer 6" Adjustable Feet Keep Cabinets From Ground Moisture and Level
 - Wall Mounting Cleat Included*
 - Lock Keeps Items Secure
 - Soft Close Hinges for Quiet and Smooth Operation
 - Wire Management System for Easy Cord Access to Outlets
 - Infinite Design and Expandable Options through Modular Design
 - CARB (California Air Resources Board) Approved to Help Environment
 - Color: Starfire White Metallic and Peppercorn Grey
 - 10-Year Limited Manufacturer Parts Warranty
 - Maximum Dimensions: 23.6" W x 21" D x 37" H
 - Minimum Dimensions: 23.6" W x 21" D x 35" H
- * Consult local cabinet professional on wall mounting & reduce weight for added safety.

Core of Design

2-DRAWER MEDIUM BASE CABINET



4-Drawer Base Cabinet UG21004B



FEATURES:

- Strong 3/4" MDF Facing in Midnight Black Metallic
- Strong 3/4" MDF & PB Cabinet w/Peppercorn Grey Textured PVC Laminate
- Custom Shop Full Radius Profile
- Industry Unique Integrated 1" Thick MDF Recessed Worktop
- Jumbo 3/4" Thick Brushed Chrome Pulls
- Designer 6" Adjustable Feet Keep Cabinets From Ground Moisture and Level
- Wall Mounting Cleat Included*
- Lock Keeps Items Secure
- Smooth Operating Full Extension Ball Bearing Drawer Glides
- Infinite Design and Expandable Options through Modular Design
- CARB (California Air Resources Board) Approved to Help Environment
- Color: Midnight Black Metallic and Peppercorn Grey
- 10-Year Limited Manufacturer Parts Warranty
- Maximum Dimensions: 23.6" W x 21" D x 37" H
- Minimum Dimensions: 23.6" W x 21" D x 35" H
- * Consult local cabinet professional on wall mounting & reduce weight for added safety.



4-Drawer Base Cabinet UG21004G



FEATURES:

- Strong 3/4" MDF Facing in Graphite Grey Metallic
 - Strong 3/4" MDF & PB Cabinet w/Peppercorn Grey Textured PVC Laminate
 - Custom Shop Full Radius Profile
 - Industry Unique Integrated 1" Thick MDF Recessed Worktop
 - Jumbo 3/4" Thick Brushed Chrome Pulls
 - Designer 6" Adjustable Feet Keep Cabinets From Ground Moisture and Level
 - Wall Mounting Cleat Included*
 - Lock Keeps Items Secure
 - Smooth Operating Full Extension Ball Bearing Drawer Glides
 - Infinite Design and Expandable Options through Modular Design
 - CARB (California Air Resources Board) Approved to Help Environment
 - Color: Graphite Grey Metallic and Peppercorn Grey
 - 10-Year Limited Manufacturer Parts Warranty
 - Maximum Dimensions: 23.6" W x 21" D x 37" H
 - Minimum Dimensions: 23.6" W x 21" D x 35" H
- * Consult local cabinet professional on wall mounting & reduce weight for added safety.



4-Drawer Base Cabinet UG21004R



FEATURES:

- Strong 3/4" MDF Facing in Ruby Red Metallic
 - Strong 3/4" MDF & PB Cabinet w/Peppercorn Grey Textured PVC Laminate
 - Custom Shop Full Radius Profile
 - Industry Unique Integrated 1" Thick MDF Recessed Worktop
 - Jumbo 3/4" Thick Brushed Chrome Pulls
 - Designer 6" Adjustable Feet Keep Cabinets From Ground Moisture and Level
 - Wall Mounting Cleat Included*
 - Lock Keeps Items Secure
 - Smooth Operating Full Extension Ball Bearing Drawer Glides
 - Infinite Design and Expandable Options through Modular Design
 - CARB (California Air Resources Board) Approved to Help Environment
 - Color: Ruby Red Metallic and Peppercorn Grey
 - 10-Year Limited Manufacturer Parts Warranty
 - Maximum Dimensions: 23.6" W x 21" D x 37" H
 - Minimum Dimensions: 23.6" W x 21" D x 35" H
- * Consult local cabinet professional on wall mounting & reduce weight for added safety.



4-Drawer Base Cabinet UG21004S



FEATURES:

- Strong 3/4" MDF Facing in Stardust Silver Metallic
 - Strong 3/4" MDF & PB Cabinet w/Peppercorn Grey Textured PVC Laminate
 - Custom Shop Full Radius Profile
 - Industry Unique Integrated 1" Thick MDF Recessed Worktop
 - Jumbo 3/4" Thick Brushed Chrome Pulls
 - Designer 6" Adjustable Feet Keep Cabinets From Ground Moisture and Level
 - Wall Mounting Cleat Included*
 - Lock Keeps Items Secure
 - Smooth Operating Full Extension Ball Bearing Drawer Glides
 - Infinite Design and Expandable Options through Modular Design
 - CARB (California Air Resources Board) Approved to Help Environment
 - Color: Stardust Silver Metallic and Peppercorn Grey
 - 10-Year Limited Manufacturer Parts Warranty
 - Maximum Dimensions: 23.6" W x 21" D x 37" H
 - Minimum Dimensions: 23.6" W x 21" D x 35" H
- * Consult local cabinet professional on wall mounting & reduce weight for added safety.



4-Drawer Base Cabinet UG21004W



FEATURES:

- Strong 3/4" MDF Facing in Starfire White Metallic
- Strong 3/4" MDF & PB Cabinet w/Peppercorn Grey Textured PVC Laminate
- Custom Shop Full Radius Profile
- Industry Unique Integrated 1" Thick MDF Recessed Worktop
- Jumbo 3/4" Thick Brushed Chrome Pulls
- Designer 6" Adjustable Feet Keep Cabinets From Ground Moisture and Level
- Wall Mounting Cleat Included*
- Lock Keeps Items Secure
- Smooth Operating Full Extension Ball Bearing Drawer Glides
- Infinite Design and Expandable Options through Modular Design
- CARB (California Air Resources Board) Approved to Help Environment
- Color: Starfire White Metallic and Peppercorn Grey
- 10-Year Limited Manufacturer Parts Warranty
- Maximum Dimensions: 23.6" W x 21" D x 37" H
- Minimum Dimensions: 23.6" W x 21" D x 35" H
- * Consult local cabinet professional on wall mounting & reduce weight for added safety.

Core of Design

2-DOOR JUMBO TALL CABINET



2-Door Tall Cabinet UG21006B



FEATURES:

- Strong 3/4" MDF Facing in Midnight Black Metallic
 - Strong 3/4" MDF & PB Cabinet w/Peppercorn Grey Textured PVC Laminate
 - Custom Shop Full Radius Profile
 - Three (3) 1" Thick Shelves (1-Fixed & 2-Adjustable) w/200lb Load Rating
 - Jumbo 3/4" Thick Brushed Chrome Pulls
 - Designer 6" Adjustable Feet Keep Cabinets From Ground Moisture and Level
 - Lock Keeps Items Secure
 - Soft Close Hinges for Quiet and Smooth Operation
 - Wire Management System for Easy Cord Access to Outlets
 - Infinite Design Options through Modular Design
 - CARB (California Air Resources Board) Approved to Help Environment
 - Color: Midnight Black Metallic and Peppercorn Grey
 - 10-Year Limited Manufacturer Parts Warranty
 - Maximum Dimensions: 35.5" W x 21" D x 82" H
 - Minimum Dimensions: 35.5" W x 21" D x 80" H
- * Consult local cabinet professional on wall mounting & reduce weight for added safety.



2-Door Tall Cabinet UG21006G



FEATURES:

- Strong 3/4" MDF Facing in Graphite Grey Metallic
 - Strong 3/4" MDF & PB Cabinet w/Peppercorn Grey Textured PVC Laminate
 - Custom Shop Full Radius Profile
 - Three (3) 1" Thick Shelves (1-Fixed & 2-Adjustable) w/200lb Load Rating
 - Jumbo 3/4" Thick Brushed Chrome Pulls
 - Designer 6" Adjustable Feet Keep Cabinets From Ground Moisture and Level
 - Lock Keeps Items Secure
 - Soft Close Hinges for Quiet and Smooth Operation
 - Wire Management System for Easy Cord Access to Outlets
 - Infinite Design Options through Modular Design
 - CARB (California Air Resources Board) Approved to Help Environment
 - Color: Graphite Grey Metallic and Peppercorn Grey
 - 10-Year Limited Manufacturer Parts Warranty
 - Maximum Dimensions: 35.5" W x 21" D x 82" H
 - Minimum Dimensions: 35.5" W x 21" D x 80" H
- * Consult local cabinet professional on wall mounting & reduce weight for added safety.



2-Door Tall Cabinet UG21006R



FEATURES:

- Strong 3/4" MDF Facing in Ruby Red Metallic
 - Strong 3/4" MDF & PB Cabinet w/Peppercorn Grey Textured PVC Laminate
 - Custom Shop Full Radius Profile
 - Three (3) 1" Thick Shelves (1-Fixed & 2-Adjustable) w/200lb Load Rating
 - Jumbo 3/4" Thick Brushed Chrome Pulls
 - Designer 6" Adjustable Feet Keep Cabinets From Ground Moisture and Level
 - Lock Keeps Items Secure
 - Soft Close Hinges for Quiet and Smooth Operation
 - Wire Management System for Easy Cord Access to Outlets
 - Infinite Design Options through Modular Design
 - CARB (California Air Resources Board) Approved to Help Environment
 - Color: Ruby Red Metallic and Peppercorn Grey
 - 10-Year Limited Manufacturer Parts Warranty
 - Maximum Dimensions: 35.5" W x 21" D x 82" H
 - Minimum Dimensions: 35.5" W x 21" D x 80" H
- * Consult local cabinet professional on wall mounting & reduce weight for added safety.



2-Door Tall Cabinet UG21006S



FEATURES:

- Strong 3/4" MDF Facing in Stardust Silver Metallic
- Strong 3/4" MDF & PB Cabinet w/Peppercorn Grey Textured PVC Laminate
- Custom Shop Full Radius Profile
- Three (3) 1" Thick Shelves (1-Fixed & 2-Adjustable) w/200lb Load Rating
- Jumbo 3/4" Thick Brushed Chrome Pulls
- Designer 6" Adjustable Feet Keep Cabinets From Ground Moisture and Level
- Lock Keeps Items Secure
- Soft Close Hinges for Quiet and Smooth Operation
- Wire Management System for Easy Cord Access to Outlets
- Infinite Design Options through Modular Design
- CARB (California Air Resources Board) Approved to Help Environment
- Color: Stardust Silver Metallic and Peppercorn Grey
- 10-Year Limited Manufacturer Parts Warranty
- Maximum Dimensions: 35.5" W x 21" D x 82" H
- Minimum Dimensions: 35.5" W x 21" D x 80" H
- * Consult local cabinet professional on wall mounting & reduce weight for added safety.



2-Door Tall Cabinet UG21006W



FEATURES:

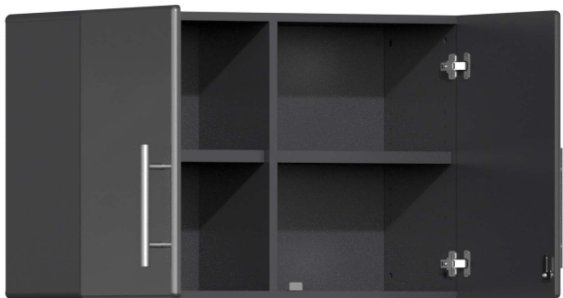
- Strong 3/4" MDF Facing in Starfire White Metallic
- Strong 3/4" MDF & PB Cabinet w/Peppercorn Grey Textured PVC Laminate
- Custom Shop Full Radius Profile
- Three (3) 1" Thick Shelves (1-Fixed & 2-Adjustable) w/200lb Load Rating
- Jumbo 3/4" Thick Brushed Chrome Pulls
- Designer 6" Adjustable Feet Keep Cabinets From Ground Moisture and Level
- Lock Keeps Items Secure
- Soft Close Hinges for Quiet and Smooth Operation
- Wire Management System for Easy Cord Access to Outlets
- Infinite Design Options through Modular Design
- CARB (California Air Resources Board) Approved to Help Environment
- Color: Starfire White Metallic and Peppercorn Grey
- 10-Year Limited Manufacturer Parts Warranty
- Maximum Dimensions: 35.5" W x 21" D x 82" H
- Minimum Dimensions: 35.5" W x 21" D x 80" H
- * Consult local cabinet professional on wall mounting & reduce weight for added safety.

Core of Design

2-DOOR JUMBO WALL CABINET
(AVAILABLE IN 3-COLORS)



2-Door Jumbo Wall Cabinet UG21008G

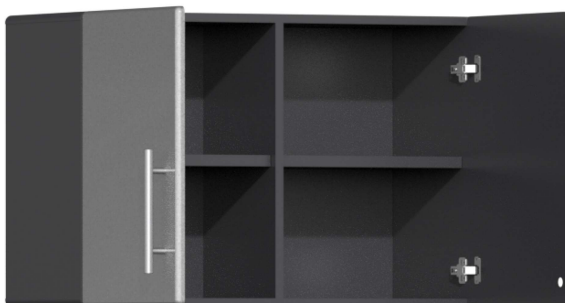
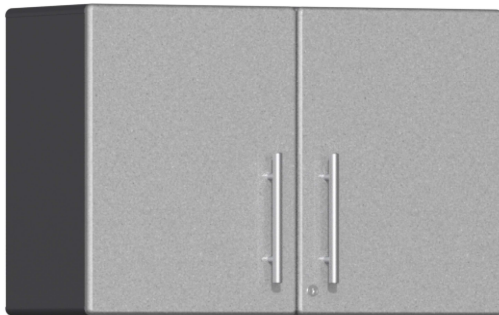


FEATURES:

- Strong 3/4" MDF Facing in Graphite Grey Metallic
 - Strong 3/4" MDF & PB Cabinet w/Peppercorn Grey Textured PVC Laminate
 - Center Vertical Partition
 - Custom Shop Full Radius Profile
 - Industrial Strength 1" Thick Wrapped Adjustable Shelf (1) with 200lb Load Rating
 - Jumbo 3/4" Thick Brushed Chrome Pulls
 - Wall Mounting Cleat Included*
 - Lock Keeps Items Secure
 - Soft Close Hinges for Quiet and Smooth Operation
 - Infinite Design Options through Modular Design
 - CARB (California Air Resources Board) Approved to Help Environment
 - Color: Graphite Grey Metallic and Peppercorn Grey
 - 10-Year Limited Manufacturer Parts Warranty
 - Maximum Dimensions: 35.5" W x 14" D x 23.6" H
 - Minimum Dimensions: 35.5" W x 14" D x 23.6" H
- * Consult local cabinet professional on wall mounting & reduce weight for added safety.



2-Door Jumbo Wall Cabinet UG21008S



FEATURES:

- Strong 3/4" MDF Facing in Stardust Silver Metallic
 - Strong 3/4" MDF & PB Cabinet w/Peppercorn Grey Textured PVC Laminate
 - Custom Shop Full Radius Profile
 - Center Vertical Partition
 - Industrial Strength 1" Thick Wrapped Adjustable Shelf (1) with 200lb Load Rating
 - Jumbo 3/4" Thick Brushed Chrome Pulls
 - Wall Mounting Cleat Included*
 - Lock Keeps Items Secure
 - Soft Close Hinges for Quiet and Smooth Operation
 - Infinite Design Options through Modular Design
 - CARB (California Air Resources Board) Approved to Help Environment
 - Color: Stardust Silver Metallic and Peppercorn Grey
 - 10-Year Limited Manufacturer Parts Warranty
 - Maximum Dimensions: 35.5" W x 14" D x 23.6" H
 - Minimum Dimensions: 35.5" W x 14" D x 23.6" H
- * Consult local cabinet professional on wall mounting & reduce weight for added safety.



2-Door Jumbo Wall Cabinet UG21008W



FEATURES:

- Strong 3/4" MDF Facing in Starfire White Metallic
 - Strong 3/4" MDF & PB Cabinet w/Peppercorn Grey Textured PVC Laminate
 - Custom Shop Full Radius Profile
 - Center Vertical Partition
 - Industrial Strength 1" Thick Wrapped Adjustable Shelf (1) with 200lb Load Rating
 - Jumbo 3/4" Thick Brushed Chrome Pulls
 - Wall Mounting Cleat Included*
 - Lock Keeps Items Secure
 - Soft Close Hinges for Quiet and Smooth Operation
 - Infinite Design Options through Modular Design
 - CARB (California Air Resources Board) Approved to Help Environment
 - Color: Starfire White Metallic and Peppercorn Grey
 - 10-Year Limited Manufacturer Parts Warranty
 - Maximum Dimensions: 35.5" W x 14" D x 23.6" H
 - Minimum Dimensions: 35.5" W x 14" D x 23.6" H
- * Consult local cabinet professional on wall mounting & reduce weight for added safety.

Core of Design

2-DOOR MEDIUM WALL CABINET

UG21009 & UG21309 ARE THE SAME CABINET



2-Door Wall Cabinet UG21009B/UG21309B



FEATURES:

- Strong 3/4" MDF Facing in Midnight Black Metallic
 - Strong 3/4" MDF & PB Cabinet w/Peppercorn Grey Textured PVC Laminate
 - Custom Shop Full Radius Profile
 - Industrial Strength 1" Thick Wrapped Adjustable Shelf (1) with 200lb Load Rating
 - Jumbo 3/4" Thick Brushed Chrome Pulls
 - Wall Mounting Cleat Included*
 - Lock Keeps Items Secure
 - Soft Close Hinges for Quiet and Smooth Operation
 - Infinite Design Options through Modular Design
 - CARB (California Air Resources Board) Approved to Help Environment
 - Color: Midnight Black Metallic and Peppercorn Grey
 - 10-Year Limited Manufacturer Parts Warranty
 - Maximum Dimensions: 23.6" W x 14" D x 23.6" H
 - Minimum Dimensions: 23.6" W x 14" D x 23.6" H
- * Consult local cabinet professional on wall mounting & reduce weight for added safety.



2-Door Wall Cabinet UG21009G/UG21309G



FEATURES:

- Strong 3/4" MDF Facing in Graphite Grey Metallic
 - Strong 3/4" MDF & PB Cabinet w/Peppercorn Grey Textured PVC Laminate
 - Custom Shop Full Radius Profile
 - Industrial Strength 1" Thick Wrapped Adjustable Shelf (1) with 200lb Load Rating
 - Jumbo 3/4" Thick Brushed Chrome Pulls
 - Wall Mounting Cleat Included*
 - Lock Keeps Items Secure
 - Soft Close Hinges for Quiet and Smooth Operation
 - Infinite Design Options through Modular Design
 - CARB (California Air Resources Board) Approved to Help Environment
 - Color: Graphite Grey Metallic and Peppercorn Grey
 - 10-Year Limited Manufacturer Parts Warranty
 - Maximum Dimensions: 23.6" W x 14" D x 23.6" H
 - Minimum Dimensions: 23.6" W x 14" D x 23.6" H
- * Consult local cabinet professional on wall mounting & reduce weight for added safety.



2-Door Wall Cabinet UG21009R/UG21309R



FEATURES:

- Strong 3/4" MDF Facing in Ruby Red Metallic
- Strong 3/4" MDF & PB Cabinet w/Peppercorn Grey Textured PVC Laminate
- Custom Shop Full Radius Profile
- Industrial Strength 1" Thick Wrapped Adjustable Shelf (1) with 200lb Load Rating
- Jumbo 3/4" Thick Brushed Chrome Pulls
- Wall Mounting Cleat Included*
- Lock Keeps Items Secure
- Soft Close Hinges for Quiet and Smooth Operation
- Infinite Design Options through Modular Design
- CARB (California Air Resources Board) Approved to Help Environment
- Color: Ruby Red Metallic and Peppercorn Grey
- 10-Year Limited Manufacturer Parts Warranty
- Maximum Dimensions: 23.6" W x 14" D x 23.6" H
- Minimum Dimensions: 23.6" W x 14" D x 23.6" H
- * Consult local cabinet professional on wall mounting & reduce weight for added safety.



2-Door Wall Cabinet UG21009S/UG21309S



FEATURES:

- Strong 3/4" MDF Facing in Stardust Silver Metallic
 - Strong 3/4" MDF & PB Cabinet w/Peppercorn Grey Textured PVC Laminate
 - Custom Shop Full Radius Profile
 - Industrial Strength 1" Thick Wrapped Adjustable Shelf (1) with 200lb Load Rating
 - Jumbo 3/4" Thick Brushed Chrome Pulls
 - Wall Mounting Cleat Included*
 - Lock Keeps Items Secure
 - Soft Close Hinges for Quiet and Smooth Operation
 - Infinite Design Options through Modular Design
 - CARB (California Air Resources Board) Approved to Help Environment
 - Color: Stardust Silver Metallic and Peppercorn Grey
 - 10-Year Limited Manufacturer Parts Warranty
 - Maximum Dimensions: 23.6" W x 14" D x 23.6" H
 - Minimum Dimensions: 23.6" W x 14" D x 23.6" H
- * Consult local cabinet professional on wall mounting & reduce weight for added safety.



2-Door Wall Cabinet UG21009W/UG21309W



FEATURES:

- Strong 3/4" MDF Facing in Starfire White Metallic
 - Strong 3/4" MDF & PB Cabinet w/Peppercorn Grey Textured PVC Laminate
 - Custom Shop Full Radius Profile
 - Industrial Strength 1" Thick Wrapped Adjustable Shelf (1) with 200lb Load Rating
 - Jumbo 3/4" Thick Brushed Chrome Pulls
 - Wall Mounting Cleat Included*
 - Lock Keeps Items Secure
 - Soft Close Hinges for Quiet and Smooth Operation
 - Infinite Design Options through Modular Design
 - CARB (California Air Resources Board) Approved to Help Environment
 - Color: Starfire White Metallic and Peppercorn Grey
 - 10-Year Limited Manufacturer Parts Warranty
 - Maximum Dimensions: 23.6" W x 14" D x 23.6" H
 - Minimum Dimensions: 23.6" W x 14" D x 23.6" H
- * Consult local cabinet professional on wall mounting & reduce weight for added safety.

Core of Design

WORKTOPS



Recessed 6-Ft Worktop Surface UG21010

FEATURES:

- Strong 1.5" Thick MDF
- Unique Channeled Surface Keeps Items from Rolling Off
- Dual Position Options of Channeled Area (near or away)
- Textured PVC Laminate
- 1.5" Thick Solid Bamboo Worktop
- Custom Shop Full Radius Profile
- Industrial Strength 300 lb Weight Load
- CARB Approved Eco-Friendly Product to Help Improve Environment
- Color: Grey
- 10-Year Limited Manufacturer Parts Warranty
- Maximum Dimensions: 70.90" W x 21" D x 1.5" H
- Minimum Dimensions: 70.90" W x 21" D x 1.5" H.





Bamboo 6-Ft Worktop Surface GA-10BB



FEATURES:

- Strong 1.5" Thick Solid Bamboo Worktop
- Custom Shop Full Radius Profile
- Industrial Strength 300 lb Weight Load
- Eco-Friendly Product to Help Improve Environment
- Color: Bamboo | Tan
- 10-Year Limited Manufacturer Parts Warranty
- Maximum Dimensions: 70.9" W x 21" D x 1.5" H
- Minimum Dimensions: 70.9" W x 21" D x 1.5" H.

*Infinite Single &
Multi-Wall Design
Options in 5-Colors*

POPULAR CABINET DESIGNS

(ALL PICTURED IN BLACK, BUT AVAILABLE IN 5-ALL FACING COLORS)



2-Piece Tall Cabinet Set UG22620



Need oversized storage and short on space? This 2-piece tall cabinet set is great for any garage, workshop or business application that requires industrial strength and unique contemporary style. Offers nearly 6-ft of single or multi-wall designs and ability to expand as your organization needs change. Metallic gloss car-like color facing available in five (5) color options.

FEATURES:

- Strong $\frac{3}{4}$ " MDF and PB Cabinet Construction w/Textured Grey PVC Laminate
- Strong $\frac{3}{4}$ " MDF Facings with PVC Gloss Metallic Color
- Industrial Strength 1-inch Thick Shelves with 200 lb Load Rating
- Jumbo 0.75-inch Brushed Chrome Pulls
- Custom Shop Style Full Radius Profile
- Lock secures Items
- Designer Style 6-inch Feet Keep Cabinets Away from Moisture
- Color: Available in Five (5) Colors
- Maximum Dimensions: 70.8" W x 21" D x 82" H
- Minimum Dimensions: 70.8" W x 21" D x 80" H



3-Piece Tall Cabinet Set UG22630



Need oversized storage and to get clutter-free in less than 10-ft, this is the popular choice. This three (3) piece tall cabinet set offers nearly 9-ft of single or multi-wall designs (8.88-ft pictured). Metallic gloss car like color facing available in five (5) color options, contemporary style and industrial strength will have you the envy of all.

FEATURES:

- Strong $\frac{3}{4}$ " MDF and PB Cabinet Construction w/Textured Grey PVC Laminate
- Strong $\frac{3}{4}$ " MDF Facings with PVC Gloss Metallic Color
- Industrial Strength 1-inch Thick Shelves with 200 lb Load Rating
- Jumbo 0.75-inch Brushed Chrome Pulls
- Custom Shop Style Full Radius Profile
- Lock secures Items
- Designer Style 6-inch Feet Keep Cabinets Away from Moisture
- Color: Available in Five (5) Colors
- Maximum Dimensions: 106.20" W x 21" D x 82" H
- Minimum Dimensions: 106.20" W x 21" D x 80" H

4-Piece Tall Cabinet Set UG22640



This oversized tall cabinet set offers nearly 12-ft of storage power for single or multi-wall designs. Metallic gloss car-like color facing available in five (5) color options, 1-inch thick industrial strength shelves (3 Per cabinet) will get you clutter-free in style and strength.

FEATURES:

- Strong $\frac{3}{4}$ " MDF and PB Cabinet Construction w/Textured Grey PVC Laminate
- Strong $\frac{3}{4}$ " MDF Facings with PVC Gloss Metallic Color
- Industrial Strength 1-inch Thick Shelves with 200 lb Load Rating
- Jumbo 0.75-inch Brushed Chrome Pulls
- Custom Shop Style Full Radius Profile
- Lock secures Items
- Designer Style 6-inch Feet Keep Cabinets Away from Moisture
- Color: Available in Five (5) Colors\
- Maximum Dimensions: 141.60" W x 21" D x 82" H
- Minimum Dimensions: 141.60" W x 21" D x 80" H



5-Piece Tall Cabinet Set UG22650

This oversized tall cabinet set offers nearly 15-ft of storage power for single or multi-wall designs (14.79-ft pictured). Metallic gloss car-like color facing available in five (5) color options, 1-inch thick industrial strength shelves (3-per cabinet) will get you clutter-free in style and strength.



FEATURES:

- Strong $\frac{3}{4}$ " MDF and PB Cabinet Construction w/Textured Grey PVC Laminate
- Strong $\frac{3}{4}$ " MDF Facings with PVC Gloss Metallic Color
- Industrial Strength 1-inch Thick Shelves with 200 lb Load Rating
- Jumbo 0.75-inch Brushed Chrome Pulls
- Custom Shop Style Full Radius Profile
- Lock secures Items
- Designer Style 6-inch Feet Keep Cabinets Away from Moisture
- Color: Available in Five (5) Colors
- Maximum Dimensions: 177" W x 21" D x 82" H
- Minimum Dimensions: 177" W x 21" D x 80" H



4-Piece Wall Set UG22040

This popular four (4) piece wall cabinet set is great for space-saving | over-the-car-door storage with ability to expand as your needs change. Infinite design options for single or multi-wall designs. Metallic gloss car-like color facing available in five (5) color options and ability to mix and match colors for unique designs will have you the envy of all.



FEATURES:

- Strong $\frac{3}{4}$ " MDF and PB Cabinet Construction w/Textured Grey PVC Laminate
- Strong $\frac{3}{4}$ " MDF Facings with PVC Gloss Metallic Color
- Industrial Strength 1-inch Thick Shelves with 200 lb Load Rating
- Jumbo 0.75-inch Brushed Chrome Pulls
- Custom Shop Style Full Radius Profile
- Lock secures Items
- Inverted Wall Cleat for Flush Mounting
- Color: Available in Five (5) Colors\
- Maximum Dimensions: 94.40" W x 14" D x 23.6" H
- Minimum Dimensions: 94.40" W x 14" D x 23.6" H.



4-Piece w/Bamboo Worktop UG23042

This four (4) piece kit with upgraded solid Bamboo worktop is great for smaller spaces not exceeding 6-ft. Provides ability to expand as your needs change. Metallic gloss car-like color facing available in five (5) color options and ability to mix and match colors for unique designs make this the perfect solution.

FEATURES:

- Strong ¾" MDF and PB Cabinet Construction w/Textured Grey PVC Laminate
- Strong ¾" MDF Facings with PVC Gloss Metallic Color
- Industrial Strength 1-inch Thick Shelves with 200 lb Load Rating
- Full Extension Drawer Glides with 100 lb Load Rating
- Jumbo 0.75-inch Brushed Chrome Pulls
- Custom Shop Style Full Radius Profile
- Lock secures Items
- Designer Style 6-inch Feet Keep Cabinets Away from Moisture
- Color: Available in Five (5) Colors
- Maximum Dimensions: 70.9" W x 21" D x 38.5" H
- Minimum Dimensions: 70.9" W x 21" D x 36.5" H





5-Piece Starter Set UG22050

This five(5) piece starter set is great for smaller spaces and provides ability to expand as your needs change. Infinite design options for single or multi-wall designs. Base cabinets provide integrated recessed worktop. Metallic gloss car-like color facing available in five (5) color options.

FEATURES:

- Strong $\frac{3}{4}$ " MDF and PB Cabinet Construction w/Textured Grey PVC Laminate
- Strong $\frac{3}{4}$ " MDF Facings with PVC Gloss Metallic Color
- Industrial Strength 1-inch Thick Shelves with 200 lb Load Rating
- Full Extension Drawer Glides with 100 lb Load Rating
- Jumbo 0.75-inch Brushed Chrome Pulls
- Custom Shop Style Full Radius Profile
- Lock secures Items
- Designer Style 6-inch Feet Keep Cabinets Away from Moisture
- Color: Available in Five (5) Colors
- Maximum Dimensions: 129.90" W x 21" D x 82" H
- Minimum Dimensions: 82.70" W x 21" D x 80" H





5-Piece with Workstation UG22051

Five (5) piece kit with workstation is the perfect solution for spaces under 9-feet and require diversified storage options. Modular design provides infinite and expandable design options for single or multi-wall designs (8.87-ft pictured). Metallic gloss car-like color facing available in five (5) color options and industrial strength 1-inch thick shelves are just a few features that transform your project.



FEATURES:

- Strong $\frac{3}{4}$ " MDF and PB Cabinet Construction w/Textured Grey PVC Laminate
- Strong $\frac{3}{4}$ " MDF Facings with PVC Gloss Metallic Color
- Industrial Strength 1-inch Thick Shelves with 200 lb Load Rating
- Full Extension Drawer Glides with 100 lb Load Rating
- Jumbo 0.75-inch Brushed Chrome Pulls
- Custom Shop Style Full Radius Profile
- Lock secures Items
- Designer Style 6-inch Feet Keep Cabinets Away from Moisture
- Color: Available in Five (5) Colors
- Maximum Dimensions: 130" W x 21" D x 82" H
- Minimum Dimensions: 106.50" W x 21" D x 80" H



6-Piece with Workstation UG22061



Six (6) piece kit with workstation offers nearly 15-feet of single or multi-wall design options. Modular design provides infinite and expandable design options. As pictured, only requires 8.87-ft. Metallic gloss car-like color facing available in five (5) color options and industrial strength 1-inch thick shelves are just a few features that transform your project.

FEATURES:

- Strong $\frac{3}{4}$ " MDF and PB Cabinet Construction w/Textured Grey PVC Laminate
- Strong $\frac{3}{4}$ " MDF Facings with PVC Gloss Metallic Color
- Industrial Strength 1-inch Thick Shelves with 200 lb Load Rating
- Full Extension Drawer Glides with 100 lb Load Rating
- Jumbo 0.75-inch Brushed Chrome Pulls
- Custom Shop Style Full Radius Profile
- Lock secures Items
- Designer Style 6-inch Feet Keep Cabinets Away from Moisture
- Color: Available in Five (5) Colors
- Maximum Dimensions: 177.50" W x 21" D x 82" H
- Minimum Dimensions: 106.50" W x 21" D x 80" H



7-Piece w/Bamboo Worktop UG22072

This seven (7) piece kit with upgraded solid Bamboo worktop is great for smaller spaces not exceeding 6-ft. Provides ability to expand as your needs change. Metallic gloss car-like color facing available in five (5) color options and ability to mix and match colors for unique designs make this the perfect solution.

FEATURES:

- Strong $\frac{3}{4}$ " MDF and PB Cabinet Construction w/Textured Grey PVC Laminate
- Strong $\frac{3}{4}$ " MDF Facings with PVC Gloss Metallic Color
- Industrial Strength 1-inch Thick Shelves with 200 lb Load Rating
- Full Extension Drawer Glides with 100 lb Load Rating
- Jumbo 0.75-inch Brushed Chrome Pulls
- Custom Shop Style Full Radius Profile
- Lock secures Items
- Designer Style 6-inch Feet Keep Cabinets Away from Moisture
- Color: Available in Five (5) Colors
- Maximum Dimensions: 213" W x 21" D x 82" H
- Minimum Dimensions: 142" W x 21" D x 80" H





7-Piece w/Bamboo Worktop UG24072

This seven (7) piece kit creates that perfect workstation, just add a comfy stool and perhaps a clock or picture between the wall cabinets. Nearly 16-feet of infinite and expandable design options for single or multi-wall designs (11.84-ft pictured). Metallic gloss car-like color facing available in five (5) color options.



FEATURES:

- Strong $\frac{3}{4}$ " MDF and PB Cabinet Construction w/Textured Grey PVC Laminate
- Strong $\frac{3}{4}$ " MDF Facings with PVC Gloss Metallic Color
- Industrial Strength 1-inch Thick Shelves with 200 lb Load Rating
- Full Extension Drawer Glides with 100 lb Load Rating • Jumbo 0.75-inch Brushed Chrome Pulls
- Custom Shop Style Full Radius Profile
- Lock secures Items
- Designer Style 6-inch Feet Keep Cabinets Away from Moisture
- Color: Available in Five (5) Colors
- Maximum Dimensions: 189.20" W x 21" D x 82" H
- Minimum Dimensions: 142" W x 21" D x 80" H



8-Piece w/Bamboo Worktop UG22082

One of the most popular kits. This eight (8) piece set offers nearly 18-ft of infinite and expandable modular design options for single or multi-wall designs (11.84-ft pictured), just add a comfy stool to create that dream workstation. Metallic gloss car-like color facing available in five (5) color options will have you stand-out in the crowd.



FEATURES:

- Strong $\frac{3}{4}$ " MDF and PB Cabinet Construction w/Textured Grey PVC Laminate
- Strong $\frac{3}{4}$ " MDF Facings with PVC Gloss Metallic Color
- Industrial Strength 1-inch Thick Shelves with 200 lb Load Rating
- Full Extension Drawer Glides with 100 lb Load Rating
- Jumbo 0.75-inch Brushed Chrome Pulls
- Custom Shop Style Full Radius Profile
- Lock secures Items
- Designer Style 6-inch Feet Keep Cabinets Away from Moisture
- Color: Available in Five (5) Colors
- Maximum Dimensions: 213" W x 21" D x 82" H
- Minimum Dimensions: 142" W x 21" D x 80" H



8-Piece w/Channeled Worktop UG23081

Eight (8) piece drawer base cabinet set designed for those not requiring shelf storage. Offers single wall run of nearly 12-ft or two (2) nearly 6-foot sections for multi-wall designs. Metallic gloss car-like color facing available in five (5) color options will have you stand-out in the crowd.

FEATURES:

- Strong $\frac{3}{4}$ " MDF and PB Cabinet Construction w/Textured Grey PVC Laminate
- Strong $\frac{3}{4}$ " MDF Facings with PVC Gloss Metallic Color
- Industrial Strength 1-inch Thick Shelves with 200 lb Load Rating
- Full Extension Drawer Glides with 100 lb Load Rating
- Jumbo 0.75-inch Brushed Chrome Pulls
- Custom Shop Style Full Radius Profile
- Lock secures Items
- Designer Style 6-inch Feet Keep Cabinets Away from Moisture
- Color: Available in Five (5) Colors
- Maximum Dimensions: 142" W x 21" D x 36.5" H
- Minimum Dimensions: 142" W x 21" D x 36.5" H





9-Piece w/Bamboo Worktop UG22092

This popular nine (9) piece kit offers nearly 18-ft of infinite and expandable modular design options for single or multi-wall designs (11.84-ft pictured). Metallic gloss car-like color facing available in five (5) color options and ability to mix and match colors for unique designs will have you the envy of all.



FEATURES:

- Strong $\frac{3}{4}$ " MDF and PB Cabinet Construction w/Textured Grey PVC Laminate
- Strong $\frac{3}{4}$ " MDF Facings with PVC Gloss Metallic Color
- Industrial Strength 1-inch Thick Shelves with 200 lb Load Rating
- Full Extension Drawer Glides with 100 lb Load Rating • Jumbo 0.75-inch Brushed Chrome Pulls
- Custom Shop Style Full Radius Profile
- Lock secures Items
- Designer Style 6-inch Feet Keep Cabinets Away from Moisture
- Color: Available in Five (5) Colors
- Maximum Dimensions: 213" W x 21" D x 82" H
- Minimum Dimensions: 142" W x 21" D x 80" H



9-Piece w/Bamboo Worktop UG23092

This popular nine (9) piece kit offers nearly 18-ft of infinite and expandable modular design options for single or multi-wall designs (11.84-ft pictured). Metallic gloss car-like color facing available in five (5) color options and ability to mix and match colors for unique designs will have you the envy of all.



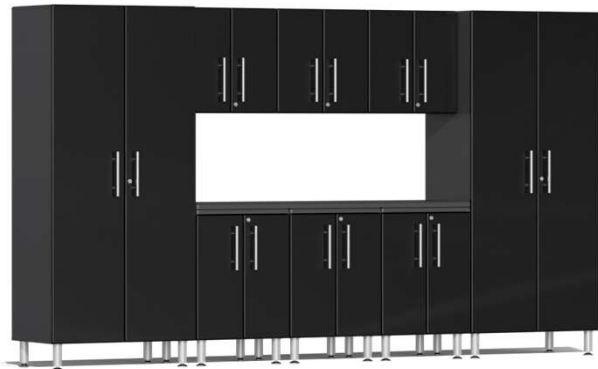
FEATURES:

- Strong $\frac{3}{4}$ " MDF and PB Cabinet Construction w/Textured Grey PVC Laminate
- Strong $\frac{3}{4}$ " MDF Facings with PVC Gloss Metallic Color
- Industrial Strength 1-inch Thick Shelves with 200 lb Load Rating
- Full Extension Drawer Glides with 100 lb Load Rating • Jumbo 0.75-inch Brushed Chrome Pulls
- Custom Shop Style Full Radius Profile
- Lock secures Items
- Designer Style 6-inch Feet Keep Cabinets Away from Moisture
- Color: Available in Five (5) Colors
- Maximum Dimensions: 213" W x 21" D x 82" H
- Minimum Dimensions: 142" W x 21" D x 80" H



9-Piece w/Bamboo Worktop UG23091

This popular nine (9) piece kit offers nearly 18-ft of infinite and expandable modular design options for single or multi-wall designs (11.84-ft pictured). This set was designed for those requiring “shelf organization. Includes industry unique channeled worktop. Metallic gloss car-like color facing available in five (5) color options and ability to mix and match colors for unique designs will have you the envy of all.



FEATURES:

- Strong $\frac{3}{4}$ " MDF and PB Cabinet Construction w/Textured Grey PVC Laminate
- Strong $\frac{3}{4}$ " MDF Facings with PVC Gloss Metallic Color
- Industrial Strength 1-inch Thick Shelves with 200 lb Load Rating
- Full Extension Drawer Glides with 100 lb Load Rating • Jumbo 0.75-inch Brushed Chrome Pulls
- Custom Shop Style Full Radius Profile
- Lock secures Items
- Designer Style 6-inch Feet Keep Cabinets Away from Moisture
- Color: Available in Five (5) Colors
- Maximum Dimensions: 213" W x 21" D x 82" H
- Minimum Dimensions: 142" W x 21" D x 80" H



10-Piece w/Channeled Worktop UG23101

This deluxe ten (10) piece kit with workstation offers nearly 21-ft of infinite and expandable modular design options for single or multi-wall designs (14.79-ft pictured). Metallic gloss car-like color facing available in five (5) color options and ability to mix and match colors for unique designs.



FEATURES:

- Strong $\frac{3}{4}$ " MDF and PB Cabinet Construction w/Textured Grey PVC Laminate
- Strong $\frac{3}{4}$ " MDF Facings with PVC Gloss Metallic Color
- Industrial Strength 1-inch Thick Shelves with 200 lb Load Rating
- Full Extension Drawer Glides with 100 lb Load Rating
- Jumbo 0.75-inch Brushed Chrome Pulls
- Custom Shop Style Full Radius Profile
- Lock secures Items
- Designer Style 6-inch Feet Keep Cabinets Away from Moisture
- Color: Available in Five (5) Colors
- Maximum Dimensions: 248.30" W x 21" D x 82" H
- Minimum Dimensions: 248.30" W x 21" D x 80" H



10-Piece w/Channeled Worktop UG22101

Deluxe ten (10) piece kit with workstation offers nearly 24-ft of infinite and expandable modular design options for single or multi-wall designs (17.75-ft pictured). Metallic gloss car-like color facing available in five (5) color options and ability to mix and match colors for unique designs.

FEATURES:

- Strong $\frac{3}{4}$ " MDF and PB Cabinet Construction w/Textured Grey PVC Laminate
- Strong $\frac{3}{4}$ " MDF Facings with PVC Gloss Metallic Color
- Industrial Strength 1-inch Thick Shelves with 200 lb Load Rating
- Full Extension Drawer Glides with 100 lb Load Rating
- Jumbo 0.75-inch Brushed Chrome Pulls
- Custom Shop Style Full Radius Profile
- Lock secures Items
- Designer Style 6-inch Feet Keep Cabinets Away from Moisture
- Color: Available in Five (5) Colors
- Maximum Dimensions: 284" W x 21" D x 82" H
- Minimum Dimensions: 213" W x 21" D x 80" H





10-Piece w/Bamboo Worktop UG22102

Deluxe ten (10) piece kit with workstation is same as Model # UG22101, but includes upgraded solid Bamboo worktop. Metallic gloss car-like color facing available in five (5) color options and ability to mix and match colors for unique designs.



FEATURES:

- Strong $\frac{3}{4}$ " MDF and PB Cabinet Construction w/Textured Grey PVC Laminate
- Strong $\frac{3}{4}$ " MDF Facings with PVC Gloss Metallic Color
- Industrial Strength 1-inch Thick Shelves with 200 lb Load Rating
- Full Extension Drawer Glides with 100 lb Load Rating
- Jumbo 0.75-inch Brushed Chrome Pulls
- Custom Shop Style Full Radius Profile
- Lock secures Items
- Designer Style 6-inch Feet Keep Cabinets Away from Moisture
- Color: Available in Five (5) Colors
- Maximum Dimensions: 284" W x 21" D x 82" H
- Minimum Dimensions: 213" W x 21" D x 80" H



11-Piece w/Bamboo Worktop UG22111

Popular eleven (11) piece kit with workstation offers a great mix of drawer and shelf organization and infinite single or multi-wall design options. Metallic gloss car-like color facing available in five (5) color options and ability to mix and match colors for unique designs.

FEATURES:

- Strong $\frac{3}{4}$ " MDF and PB Cabinet Construction w/Textured Grey PVC Laminate
- Strong $\frac{3}{4}$ " MDF Facings with PVC Gloss Metallic Color
- Industrial Strength 1-inch Thick Shelves with 200 lb Load Rating
- Full Extension Drawer Glides with 100 lb Load Rating
- Jumbo 0.75-inch Brushed Chrome Pulls
- Custom Shop Style Full Radius Profile
- Lock secures Items
- Designer Style 6-inch Feet Keep Cabinets Away from Moisture
- Color: Available in Five (5) Colors
- Maximum Dimensions: 284" W x 21" D x 82" H
- Minimum Dimensions: 213" W x 21" D x 80" H





11-Piece w/Bamboo Worktop UG22112

Popular eleven (11) piece kit with upgraded solid Bamboo worktop offers a great mix of drawer and shelf organization. Infinite single or multi-wall design options, so lets your creative juices run wild to create that perfect solution for your space. Metallic gloss car-like color facing available in five (5) color options and ability to mix and match colors for unique designs.



FEATURES:

- Strong $\frac{3}{4}$ " MDF and PB Cabinet Construction w/Textured Grey PVC Laminate
- Strong $\frac{3}{4}$ " MDF Facings with PVC Gloss Metallic Color
- Industrial Strength 1-inch Thick Shelves with 200 lb Load Rating
- Full Extension Drawer Glides with 100 lb Load Rating
- Jumbo 0.75-inch Brushed Chrome Pulls
- Custom Shop Style Full Radius Profile
- Lock secures Items
- Designer Style 6-inch Feet Keep Cabinets Away from Moisture
- Color: Available in Five (5) Colors
- Maximum Dimensions: 284" W x 21" D x 82" H
- Minimum Dimensions: 213" W x 21" D x 80" H



15-Piece w/Dual Workstations UG22152

This massive (15) piece kit offers nearly 33-ft of infinite and expandable modular design options for single or multi-wall designs (11.84-ft pictured). Dual workstations highlighted with upgraded solid Bamboo worktop. Metallic gloss car-like color facing available in five (5) color options and ability to mix and match colors for unique designs will have you the envy of all.

FEATURES:

- Strong $\frac{3}{4}$ " MDF and PB Cabinet Construction w/Textured Grey PVC Laminate
- Strong $\frac{3}{4}$ " MDF Facings with PVC Gloss Metallic Color
- Industrial Strength 1-inch Thick Shelves with 200 lb Load Rating
- Full Extension Drawer Glides with 100 lb Load Rating
- Jumbo 0.75-inch Brushed Chrome Pulls
- Custom Shop Style Full Radius Profile
- Lock secures Items
- Designer Style 6-inch Feet Keep Cabinets Away from Moisture
- Color: Available in Five (5) Colors
- Maximum Dimensions: 390.5" W x 21" D x 82" H
- Minimum Dimensions: 248.50" W x 21" D x 80" H





16-Piece w/Workstation UG22162

This "Super System" provides sixteen (16) pieces and nearly 36-ft of infinite modular design options for single or multi-wall designs (23.67-ft pictured). Metallic gloss car-like color facing in five (5) color options and ability to mix and match colors for unique designs makes this the choice for most discerning projects.

FEATURES:

- Strong $\frac{3}{4}$ " MDF and PB Cabinet Construction w/Textured Grey PVC Laminate
- Strong $\frac{3}{4}$ " MDF Facings with PVC Gloss Metallic Color
- Industrial Strength 1-inch Thick Shelves with 200 lb Load Rating
- Full Extension Drawer Glides with 100 lb Load Rating
- Jumbo 0.75-inch Brushed Chrome Pulls
- Custom Shop Style Full Radius Profile
- Lock secures Items
- Designer Style 6-inch Feet Keep Cabinets Away from Moisture
- Color: Available in Five (5) Colors
- Maximum Dimensions: 426" W x 21" D x 82" H
- Minimum Dimensions: 284" W x 21" D x 80" H





17-Piece w/Workstation UG22172

This "Super System" provides seventeen (17) pieces and nearly 36-ft of infinite modular design options for single or multi-wall designs (23.67-ft pictured). Metallic gloss car-like color facing in five (5) color options and ability to mix and match colors for unique designs makes this the choice for most discerning projects.

FEATURES:

- Strong $\frac{3}{4}$ " MDF and PB Cabinet Construction w/Textured Grey PVC Laminate
- Strong $\frac{3}{4}$ " MDF Facings with PVC Gloss Metallic Color
- Industrial Strength 1-inch Thick Shelves with 200 lb Load Rating
- Full Extension Drawer Glides with 100 lb Load Rating
- Jumbo 0.75-inch Brushed Chrome Pulls
- Custom Shop Style Full Radius Profile
- Lock secures Items
- Designer Style 6-inch Feet Keep Cabinets Away from Moisture
- Color: Available in Five (5) Colors
- Maximum Dimensions: 426" W x 21" D x 82" H
- Minimum Dimensions: 284" W x 21" D x 80" H

